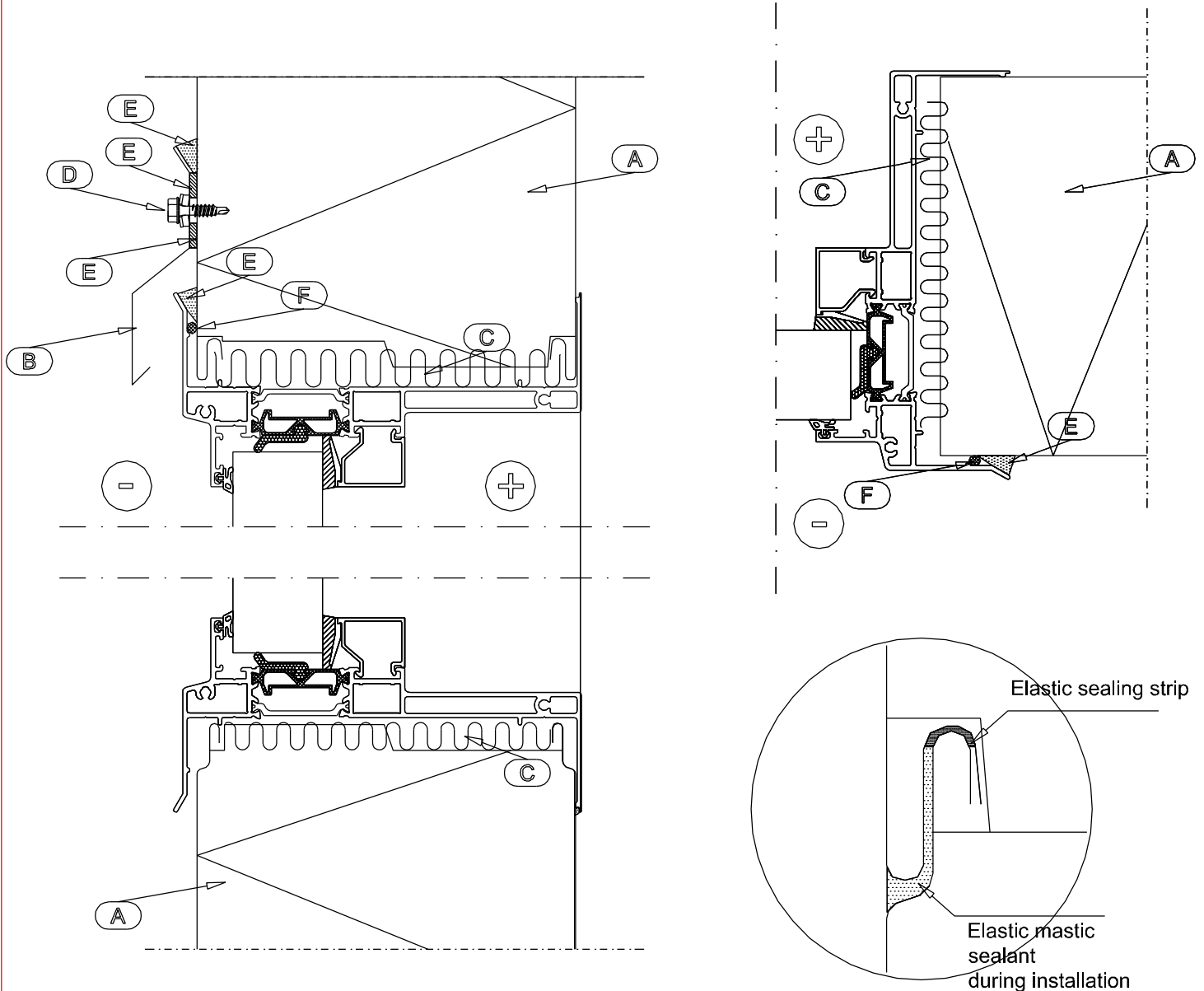


Päiväys	22.1.2010	Suhde	1:2,5	Tulostuskoko	A4	Piirustus nro	
---------	-----------	-------	-------	--------------	----	---------------	--

Note! The Pontti-window is installed during panel installation.

- A. Sandwich panel
- B. Drip flashing
- C. Insulation strip
- D. Flashing fastener, washer with sealing
- E. Elastic sealant
- F. EPDM-rubber sealant



Note! Be sure to seal the joint edge of the window-related elements during installation with an elastic sealing compound on the outside = 200 mm apart and on the inside 60 mm apart.